



For QUALITY PEOPLE

CE



CREATIVE HEALTHTECH PVT LTD



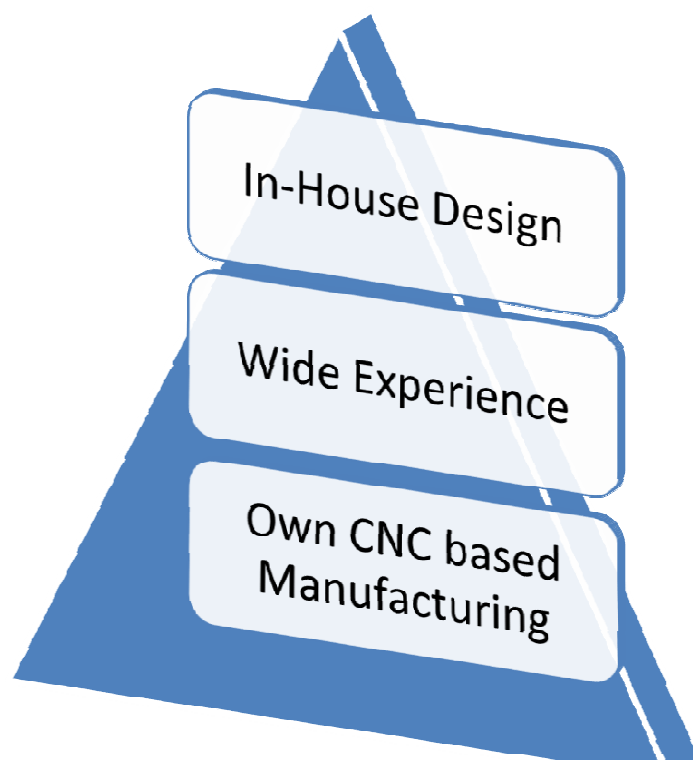
MODULAR HOSPITAL DESIGN

CREATIVE Healthtech Pvt Ltd a team of Engineers having vast experience in the medical engineering field, and are dedicated towards offering products which are highly precise and well engineered. The pre-engineered Modular operation theatre not only solves the problem but also facilitates speedy construction, high quality finish in prevention of contamination build up, long durability, robust and flexible design for future expansion, ease of maintenance.

We also excel in providing Hospital design and execution by using latest international & NABH standards. Our excellence in all spheres of our operations has made us a renowned name in the medical field since 2008.

We are providing Complete Hospital Solution under one roof. Factory is fully equipped with different type of CNC automated & Manual machines for quality Products.

Company is an ISO9001:2015 certified and its products are CE compliance apart from the other certifications i.e. ISO14001, ISO18001, GMP, ISO13485.



OUR PRODUCTS ARE ENGINEERED KEEPING IN MIND ALL THE NECESSARY QUALITY CRITERIA FOLLOWED INTERNATIONALLY/ NATIONALLY & AS PER NABH STANDARDS. QUALITY REGULATIONS ARE STRICTLY ADHERED TO RIGHT FROM THE STAGE OF PROCUREMENT OF RAW MATERIALS TO THE FINAL DISPATCH OF THE GOODS.

- ✦ *Trunkey hospital projects*
- ✦ *Hospital design consultancy*
- ✦ *Hospital interior & renovations*
- ✦ *AMC & CMC of Modular OT*
- ✦ *ICU, NICU, IVF, clean Isolation rooms*
- ✦ *medical gas pipeline system*
- ✦ *Hospital Steel Furniture*
- ✦ *Customized solution*

Modular operation theatre (As per NABH Guideline)

Modular wall & Ceiling panels

Laminar air flow system

Bacteria resistance paint coatings

Vinyl floorings

Ceiling pendant system

MOT control panels

X-ray film viewers and LED lights

Writing list board

Pressure dampers

Hermetically sealed doors

Storage cabinets

Surgical scrub stations

Pass box (hatch box)

OT instrument cabinet

OT trolleys and OT crash cart

OT lights and tables

Anesthesia machines and Autoclave

GYPSUM/ BIASON BOARD BACKED PANELS

1. **Stainless Steel SS304 Panels backed by Gypsum:** 1.6mm thick Stainless steel sheet panels backed by 9mm/12mm thick Gypsum board.
2. **Galvanized Steel Panels backed by Gypsum:** 1.6mm thick galvanized steel sheet backed by 9mm/12mm thick Gypsum board.



PUF INFILLED PANELS

3. **PUF In-filled Stainless Steel Panels:** High density PUF in-filled between two sheets of Stainless steel sheet.



4. **PUF In-filled GI/PPGI Panels:** High density PUF in-filled between two sheets of GI/PPGI sheet.



5. **PUF In-filled High Pressure Laminate Panels:** High density PUF in-filled between two sheets of High Pressure Laminate sheet with thickness 3mm/4mm.



6. **Aluminium Extruded True Modular PPGI/ SS/HPL/Glass Panel – PUF In filled with Aluminium Extruded Profile.** It is very easy to assemble, easy to re-assemble, truly Modular with Aluminium extruded jointing section, Aluminium extruded Ceiling jointing section, Heavy duty aluminium coving with internal & External Corners.



7. Solid High Pressure Laminate Panel: 12mm thick solid high pressure mounted with steel structure.



8. Solid Mineral Surface (SMS) thickness from 4mm to 18mm.



9. Glass Panels with Graphic design having 8, 10, 12mm thick toughened Glass.



EGP/ GI/ PPGI MODULAR OT WITH ANTIBACTERIAL PAINT COATING: FILLING OF ALL JOINTS & CAVITIES WITH METAL EPOXY FILLER AND SANDED FLUSH TO PROVIDE A SEAMLESS FINISH INCLUDING ONE PRIMER AND THREE COATS OF IMPORTED ANTIBACTERIAL & ANTIFUNGAL PAINT EQUIVALENT TO A MINIMUM DRY FILM THICKNESS OF 300 MICRONS. MODULAR ROOM WILL BE FULLY JOINT LESS, SEAMLESS & WASHABLE WITH NO DEEP CORNERS. COLOUR AS PER CUSTOMER'S REQUIREMENT.



GLASS MODULAR OT: IMPORTED MODULAR OT IN GLASS WITH GRAPHIC DESIGNS AND SEAMLESS WASHABLE, HYGIENIC.

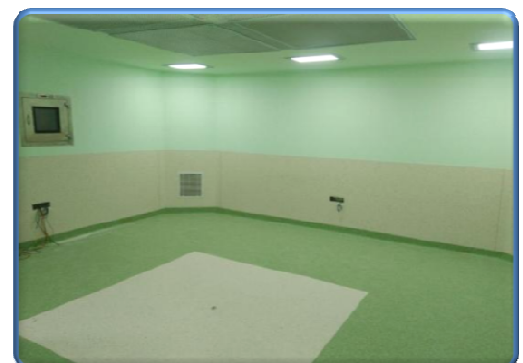
HPL MODULAR OT: HIGH PRESSURE LAMINATE PANELS HAVING ANTIMICROBIAL PROPERTIES. SOLID HIGH PRESSURE LAMINATE IN THICKNESS OF 12MM OR PUF IN-FILLED BETWEEN TWO SHEET OF 4MM HPL SHEETS. SEAMLESS GLASS MODULAR OPERATION THEATER WITH GRAPHIC DESIGNS.



STAINLESS STEEL MODULAR OT: INDIAN MODULAR OPERATION THEATRE IN TRUE MODULAR PANELS IN STAINLESS STEEL SHEETS, WALL & CEILING PANELS WILL HAVE W TYPE ALUMINIUM EXTRUDED PROFILE IN PERIPHERY OF PANEL WITH PUF IN-FILLED AND H TYPE ALUMINIUM SECTION TO JOINTING PANELS WITH EACH OTHER AND C-H TYPE PROFILE FOR CEILING HANGING SUPPORT SYSTEM.



VINYL MODULAR OT: Imported Vinyl on Walls with Modular Ceiling in Galvanized steel with anti fungal paint and seamless washable, hygienic surface. It is equipped with Laminar Air flow & HVAC system as per NABH guidelines.



LAMINAR FLOW : MODULAR OT LAMINAR AIR FLOW WITH INBUILT HEPA FILTERS HAVING EFFICIENCY OF 99.97% AT 0.3MICRON. AIR DIFFUSERS ARE MADE OUT OF MONOFILAMENT POLYESTER FABRIC AND ANODIZED ALUMINUM/ SS304 PERFORATION.

THE SYSTEM IS CUSTOM DESIGNED AND GASKET CEILING EXTRUSIONS AND FILL-IN PANELS PROVIDE A SEAL BETWEEN THE CLEAN, STERILE ENVIRONMENT OF THE OPERATING ROOM AND THE CEILING PLENUM. THIS SEAL ALLOWS THE ROOM TO BE PRESSURIZED TO REDUCE OR ELIMINATE INFILTRATION OF CONTAMINANTS FROM ADJACENT AREAS.

THE LAMINAR FLOW DIFFUSERS PROVIDE AN EVEN UNIDIRECTIONAL FLOW OF CLEAN SUPPLY AIR FROM THE CEILING TO THE FLOOR, WASHING OVER ANY OCCUPANTS AND EQUIPMENT IN THE ROOM WITH MINIMAL ENTRAINMENT OF ROOM AIR. CONTAMINANTS ARE DISPLACED DOWN, AWAY FROM THE PATIENT AND STAFF, AND EXHAUSTED OUT THE LOW-LEVEL RETURNS.

1. LAF MODEL: CR MONOFAB-SS
2. LAF MODEL: CR MONOFAB-AL
3. LAF MODEL: CR SS-SS
4. LAF MODEL: CR SS-AL
5. LAF MODEL: CR AL-SS
6. LAF MODEL: CR AL-AL

AIR HANDLING UNIT- DOUBLE SKIN PPGI SHEET PUF IN-FILLED PANELS WITH AIR MIXING CHAMBER, PRE FILTER, FINE FILTER, COOLING COIL, HEATING COILS/ ELECTRICAL HEATER WITH FOLLOWING SPECIFICATIONS:-

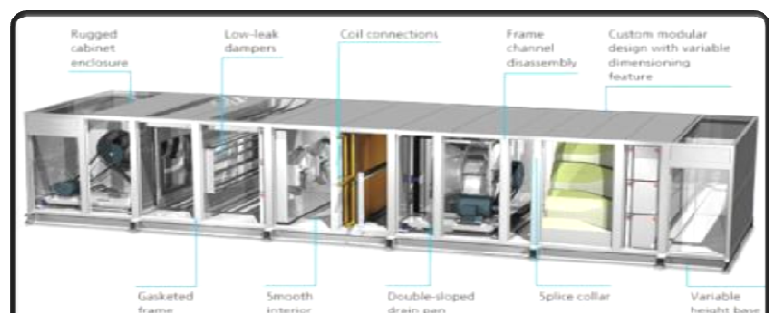
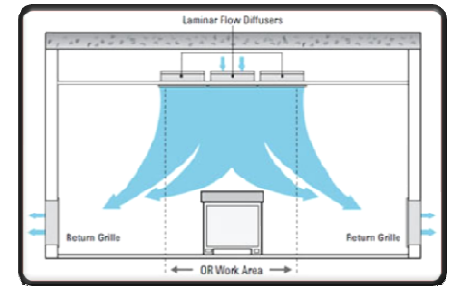
CFM: 1000 – 10000

SP: 30 – 125MMWC

DAMPER: FRESH AIR/ RETURN AIR/ SUPPLY AIR
FILTERS: PRE, FINE, CARBON, HEPA AS PER REQUIREMENT.

DOUBLE SKIN PPGI PANELS.

THERMAL BRAKE ALUMINIUM PROFILE.



OT CONTROL PANELS: Creative provides wide range of Control Panels with different configuration as:-

1. **Computerized Touch Screen Control Panels.**
2. **Electronic Touch switch type Control Panels**
3. **Membrane switch type Control Panels**

Any Control Panel can be customized as per requirements:-

- | | |
|-----------------------------------|--------------------------------|
| 1. Digital Day Time Clock, | 2. Digital Elapsed Time Clock |
| 3. Temperature Display & Control, | 4. Humidity Display, |
| 5. AC/AHU On- Off, | 6. Hot & Cool Selection |
| 7. HEPA Filter Status, | 8. Room Pressure Display |
| 9. Lighting Control, | 10. Medical Gas Alarm |
| 11. Hands Free Phone | 12. Music System with Speaker, |
| 13. Data Points, Audio-Video | |



2. TOUCH SWITCH TYPE CONTROL PANELS



3. MEMBRANE SWITCH TYPE CONTROL PANELS



CEILING PENDANTS

Creative Ceiling Pendants caters an integrated support for Surgical, Anesthetic, monitoring equipment for Doctors and Medical Staff in operation Theatre for ease of working. These pendants are accommodated with Modular Electrical switch sockets & Gas terminal units.

1. Aluminium Extruded Pendants duly powder coated.
2. Swivel, Single Arm, Double Arm, Fixed type
3. Provision for Gas outlets, electrical, Data Points
4. Infusion pump pole, IV Pole, Suction bracket
5. Provision for Gas Outlet Points.
6. Modular Electrical Sockets.
7. Movable up to 360°
8. Compliance to CE standards.



STORAGE UNITS

The storage unit can be made with 1.50 mm thick EGP Zinc coated steel panels, Stainless Steel panels, High pressure Laminate panels & Glass as per OT material.



. The storage unit will be divided in 2 equal parts and each part will have individual glass doors with high quality locking system. Each part will be provided with glass racks.

HATCH BOX (PASS BOX)

A Hatch should be provided in each operation theater to remove waste materials from the operation theater to Dirty linen area just adjacent to Operation Theater. Each Hatch should be equipped with two doors and the door should be operated electronically. The Hatch should be designed in such a way that only one door should be opened at one time. The UV light should be so installed that it is kept on while both the doors are closed, this UV light has to be automatically turned off in case of opening of either of the doors. There shall be indicators on both side of the OT so that door open / close status can be monitored from both ends

MODEL: CR- HB01- Electronic
MODEL: CR- HB02- Manual



WRITING LIST BOARDS

One operating list board should be provided in each operating theater. It should be made of ceramic or frosted Glass having Magnetic properties and should be flushed to the wall of the operating room.

Creative offers writing list board with frosted glass also.

MODEL: CR LB1- Ceramic Type

MODEL: CR LB2- Frosted Glass Type



HERMETIC SEALED DOORS

HERMETIC SEALED SLIDING DOOR

To maintain satirically and the correct air pressure in the room, all doors into and out should be of the sliding, hermetically sealing type in High Pressure Laminate / Stainless steel.

Doors are operated Manually by hand free operation and Automatic by hand sensor, Foot sensor and safety beam sensor.



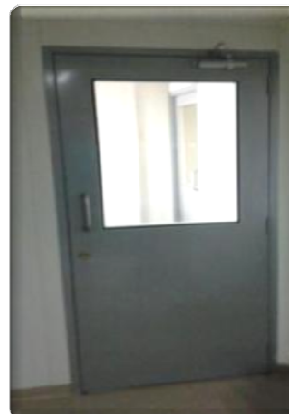
HERMETIC SEALED HINGED DOOR - HPL

Sealed Hinged door in High Pressure laminate suitable for OT, ICU, NICU, IVF Rooms etc. These doors are hermetic sealed with sealing Gasket & automatic drop seal.



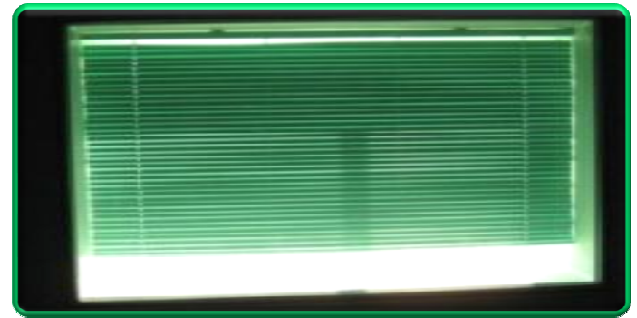
HERMETIC SEALED HINGED DOOR - SS

Hinged door in Stainless steel, Galvanized steel duly powder coated suitable for OT, ICU, NICU, IVF Rooms etc. These doors are hermetic sealed type with Sealing gasket & automatic drop seal.



Double Glaze Sealed windows with Motorized blind operated by wall mounted switch & Remote Operated. The view window of specified size shall be providing consisting of: Double insulated fixed glazing with not less than 5mm thick toughened glass. Window frame shall be powdered coated Aluminium of approved shape flush mounted with wall paneling. Motorized horizontal Venetian Blinds of powder coated Aluminium strips of vista level or equivalent of approved shade including necessary accessories. The motor shall be of reputed brand approved by Engineer – in – charge. The Venetian blinds should be motorized for 90 degree rotational.

SEALED VIEW WINDOWS



PRESSURE RELIEF DAMPER

Pressure relief dampers should be provided in each room to prevent contamination of air from clean and dirty areas. Suitably sized air pressure relief damper should be strategically placed, enabling differential room pressure to be maintained and ensure that when doors are opened between clean and dirty areas. Counter- weight balancing system should be provided in the PRD to maintain positive pressure inside the operation room.

Air pressure stabilizers should have unique capability of controlling differential pressure to close tolerance. The PRD should remain closed at pressure below the set pressure and should open fully at pressure and should open fully at pressure only fractionally above the threshold pressure. The body should be epoxy powder coated as per standard BS colors. First class electrolyzed steel plate should be used for body and with high grade SS304 stainless steel for blades



CLEAN ROOM LIGHTS – PERIPHERAL LIGHTS

Clean room lights / Peripheral lights are confirming to protection compliance as per IP65. Luminaries body will be dust & rust proof
Body will be made of aluminium / galvanized steel duly Pre-treated & Powder Coated.



X-RAY FILM VIEWERS

The system should have electrical safety codes for high & low voltage system. The theatre is to be equipped with a X-ray viewing screen & flush mounted with wall paneling. View screens are available in LED technology with 1 film, 2 Film, 3 Film, 4 Film as per requirement.

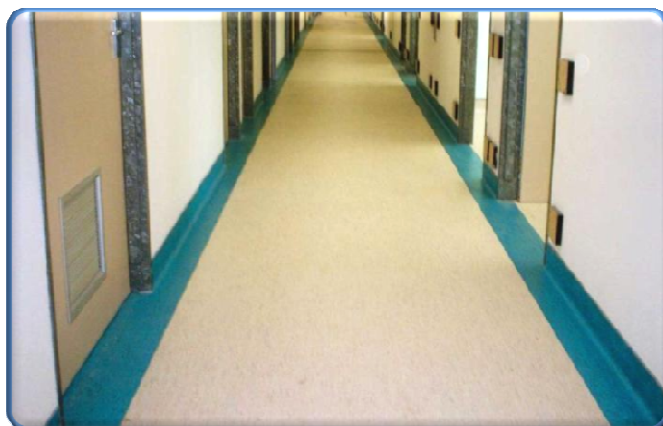
Housing of the X-Ray Viewer will be made of extruded aluminium & aluminium sheet duly powder coated. Membrane type electronic control for dimming of the viewer will be provided at the bottom. M for Membrane and S for push/ rocker switches



VINYL FLOORINGS

Certification & Classification	Standards	Primo SD	iQ Toro SC
Type of floor covering	ISO 10582 - (EN 649)	Static dissipative pressed homogenous vinyl with black backing	Permanently static conductive pressed homogenous vinyl with carbon backing
Binder content	ISO 10581	Type I	Type I
CE Certification	EN 14041	Yes	Yes
Classification	ISO 10581 - (EN 649)	Commercial: 34 Industrial: 43	Commercial: 34 Industrial: 43
ISO Certification		Ronneby ISO 9001/ Ronneby ISO 14001	Ronneby ISO 9001/Ronneby ISO 14001
Technical Characteristics	Standards	Primo SD	iQ Toro SC
PUR		Yes	Yes
Total Thickness	ISO 24346 - EN 428	2.0 mm	2.0 mm
Wear Layer Thickness	ISO 24340 - EN 429	2.0 mm	2.0 mm
Total Weight /m ²	ISO 23997 - EN 430	3000 g	2950 g
Form of delivery	ISO 24341 - EN 426	Approx. 23 running metres x 200 cm	Approx. 23 running metres x 200 cm
Technical Performances	Standard	Primo SD	iQ Toro SC
Dimensional Stability	ISO 23999 - EN 434	≤ 0.40 % for rolls ≤ 0.25 % for tiles	≤ 0.40 % for rolls ≤ 0.25 % for tiles
Reaction to fire	EN 13501-1 EN ISO 9239 - 1 EN ISO 11925 - 2	Class B _{s1} ≥ 8 kW/m ² Pass	Class B _{s1} ≥ 8 kW/m ² Pass
Abrasion volume loss	EN 660: Part 2	Group P: ≤ 4.0 mm ³	Group P: ≤ 4.0 mm ³
Residual indentation	ISO 24343-1 - EN 433	Required value: ≤ 0.10 mm Average measured value: 0.03 mm	Approx. 0.02 mm
Castor chair test	ISO 4918 - EN 425	Suitable	Suitable
Flexibility	ISO 23344 EN 435	Pass	Pass
Static electric charge	EN 1815	< 2 kV	< 2 kV
Ease of decontamination	ISO 8690	Good	Excellent
Electrical insulation	VDE 100, Part 600	R _i ≥ 5x10 ⁹ Ohms	R _i ≥ 5x10 ⁹ Ohms
Electrical resistance	ESD-approval SP method 2472 EN 1091 EN/IEC 61340-4-1, 100 V EN/IEC 61340-4-5	R _i ≤ 10 ⁹ Ohms	R _i ≤ 10 ⁹ Ohms R _i 5x10 ⁴ ≤ R _i ≤ 10 ⁹ Ohms R _i 5x10 ⁴ ≤ R _i ≤ 10 ⁹ Ohms R _i 5x10 ⁴ ≤ R _i ≤ 10 ⁹ Ohms ≤ 3.5 x 10 ⁹ Ohms
Total VOC emissions	ISO 16000-6 AgBB/ DIBt Indoor air quality FloorScore	≤ 10 µg/m ³ (after 28 days) Platinum	≤ 10 µg/m ³ (after 28 days) Confirm Platinum SCS certified
Underfloor heating		Suitable - max 27°C	Suitable - max 27°C
Thermal resistance	EN ISO 10456 (EN 12524)	Approx. 0.01 m ² K/W	Approx. 0.01 m ² K/W
Light fastness	EN ISO 105 - B02	≥ level 6	≥ level 6
Chemical resistance	ISO 26987 - EN 423	Good resistance	Excellent
Clean room	ISO 14644 - 1 ASTM F24 F51		ISO class 4 Class A
Bacteria resistance	DIN EN 846 Part C	Does not favour growth	Does not favour growth
Slip resistance	DIN 51130 EN 13893	R ₉ ≥ 0.3	R ₉ ≥ 0.3
Seam strength	EN 684	Average value: ≥ 240 N/50mm Individual values: ≥ 180 N/50 mm	Average value: ≥ 240 N/50 mm Individual values: ≥ 180 N/50 mm

The above mentioned information is subject to modification for the benefit of further improvement



SURGICAL SCRUB STATIONS

Standard Surgical Scrub Station available in **1/ 2/ 3 Bay** Operated by Touch less Sensor, Foot Operated, Elbow Operated with inbuilt mixer for Hot & Cold water. It is in Stainless Steel SS304. We can make customized Scrub Stations.

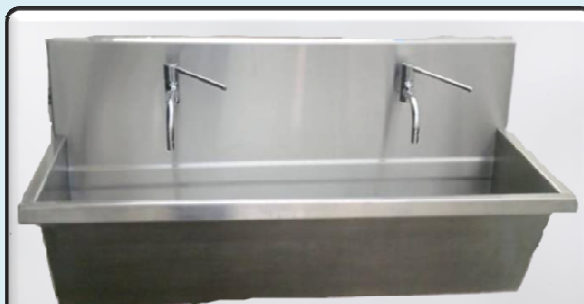


CUSTOMIZED model with Sensor/ Foot/ Elbow/ Knee Operated in 3 Bay/ 2 Bay/ 1 Bay.



MINI model available in Elbow Operated in 3 Bay/ 2 Bay/ 1 Bay.

MEDIUM model available in Sensor / Elbow Operated in 3 Bay/ 2 Bay/ 1 Bay.



Surgical Operating Lights are available in LED with Light intensity from 100000 Lux to 200000 Lux at the distance of 1 metre with multiple step dimming, Colour temperature 4300K, adjustable focus with sterilization handle.

CREATIVE HEALTHTECH PVT LTD
LED SURGICAL LIGHT
An ISO 9001:2008 Company

Great Behave of Laminar Flow
With the unique design, our LED Light provides a very nice performance of laminar flow to the operation room.

Our LED light have special European design for ventilation of heat.

Changing the Light Colour
You have the possibility to choose the optimum OR light as preferred or according to the tissue type and the wound field texture. This function can facilitate the clear distinction between various types of tissue and the perception of true tissue colors. Additionally, adjustable color selection can help with concentration of errors due to fatigue.

Safety Glass for Lens Protection
We offer LED lights with protective fire resistant ESG safety glass cover for scratch proof, fast disinfection process and improve the light penetration. It is made of monolayer safety glass which protects the lens from ultra-violet and infrared rays.

Sterilizable handle:
We provide high quality Sterilizable Handle.

Life of Bulb more than 45000 Hrs.
The Technomed LED Series offer an incredible long life of the bulbs more than 45000 hours.

For our Hex Model we provide double side touch screen control panel. It also has memory preset options.

For our normal LED Series we can adjust the intensity and colour temperature of light.

Inter changeable connector pods
For our hexagonal model we are providing wireless connectors for connections. Each pod can be easily removed or added by the surgeons and they are interchangeable. The main positive feature here is that the surgeon can replace the pods without help of engineers.

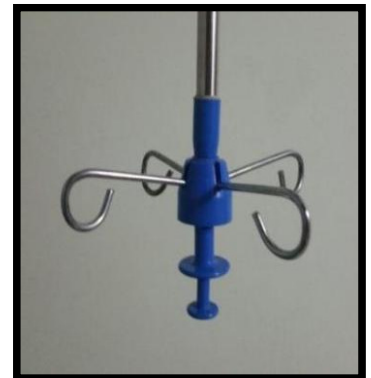
Web Site: www.creativemodularot.co.in , www.creativeoperationtheatre.com



****For detail of OT Light & OT Tables, please ask for separate catalog.**

TRACK CURTAIN PARTITION SYSTEM

Aluminium extruded track system duly powder coated and washable stain free Curtain system with Net on the top with accessories like hooks, end cap, wall bracket, ceiling support.



SAFETY RAILS & CORNER GARDS



BED HEAD PANELS

Made of Aluminum extruded Profiles Duly Powder Coated, Fully Modular Format
Customized design as per site condition & requirement, also Available in continuous BHP
Provision for Gas Outlet, Electrical, NCS, Data Points,
Medical Rail for Suction Clamp, Document Basket, IV Pole,
Infusion Pump Pole, Available in Multi colors

HORIZONTAL BED HEAD PANELS

CUSTOMIZED BED HEAD PANELS



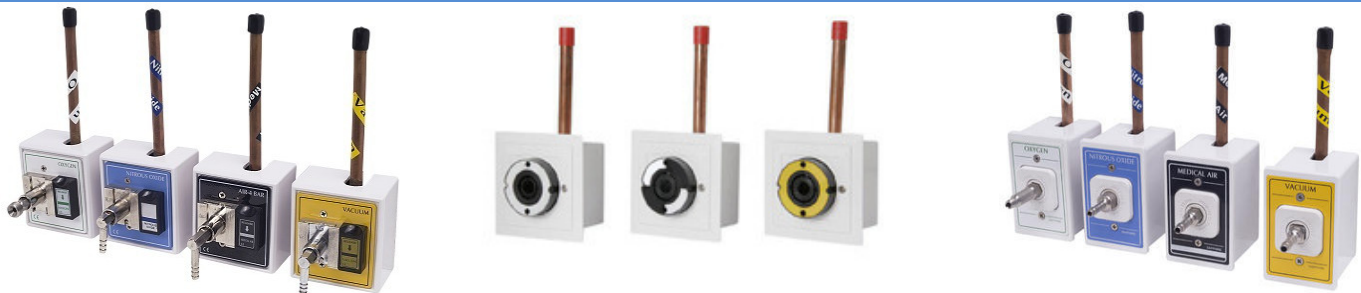
VERTICAL BED HEAD PANEL



Medical Grade Copper pipeline & copper fitting with accessories.



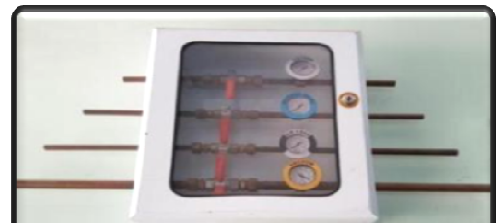
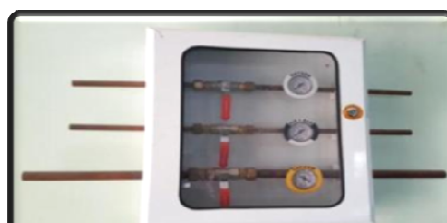
GAS OUTLET POINTS



AREA ALARM – DIGITAL & ANALOG



AREA VALVE BOXES





Source

NOTES:

- 1) The Features, Accessories and Specification of the products shown in the catalogue are standard, which are comparable with the leading makes in the industry.
The major raw-material used are CRCA tubes and sheets, SS tubes and sheets of leading manufacturers only. The fabricated components are pre-treated using seven tank 'dip and drain' process, powder coated using quality branded powder paint, and use components and accessories of reputed brands.
- 2) The detailed Features, Accessories and Specification shall be provided in the 'Technical-commercial' quotation along with Terms and Conditions of supply.
- 3) The photographs, features, accessories and specification as shown in the catalogue and the 'technical-commercial' quotation may be altered without prior notice to incorporate the latest technological and design developments.
- 4) The Photographs, Features, Accessories and Specification of the products shown in the catalogue are standard sample products only which are illustrative in nature. The customers are advised to obtain detailed product features, accessories, and specification of products they wish to buy in writing from us before the orders are placed.
- 5) The design, Logo, Images and Text appearing in the catalogue/website are right protected property of Creative HealthTech Pvt. Ltd. only. Unauthorized use or tampering with the same may invite penal action.
- 6) Our 'Flag-ship' products consist of MODULAR OPERATION THEATRE, NICU, ICU and MEDICAL GAS PIPELINE SYSTEMS with an impressive customer list across the country.

CREATIVE HEALTHTECH PVT LTD

Head Quarter and North India Operations (DELHINCR)

CREATIVE HEALTH TECH PVT LTD
Plot No.295, E-rokesh-III, Udyog Kendra-II Greater NOIDA,
G.B.Nagar, UP, India PIN-201306
Contact Person: Mr Sunil Dutt, Director
Mob: +91-9911204648 ; +91-9811339889
E-Mail: salesnorth@creativemodularot.co.in
Alternative E-mail: chymed@gmail.com
Web Site: www.creativemodularot.co.in
Web Site: www.creativeoperationtheatre.com

South India Operations (BANGALORE):

CREATIVE HEALTH TECH PVT LTD
No.283, 9th Main Road West of Chord Road Marjunath Nagar
Bangalore, Karnataka, India PIN-560010
Contact Person: Mr Rajendra Kurup, Director
Mob: +91-9911204648 ; +91-9958147710
E-Mail: salessouth@creativemodularot.co.in
Alternative E-mail: rajendrakurup55@gmail.com
Web Site: www.creativemodularot.co.in
Web Site: www.creativeoperationtheatre.com







GALLERY



GALLERY



www.creativemodularot.co.in,
info@creativemodularot.co.in



GALLERY



www.creativemodularot.co.in,
info@creativemodularot.co.in



SOME REPUTED CUSTOMERS



SOME REPUTED CUSTOMERS



Globus Hospital
for Joint Replacement

NABH Accredited



Kalinga Institute of Medical Sciences (KIMS)

Recognised by Ministry of Health and Family Welfare,
Government of India & Medical Council of India (MCI)



ADIVA
HOSPITAL



CARITAS Hospital



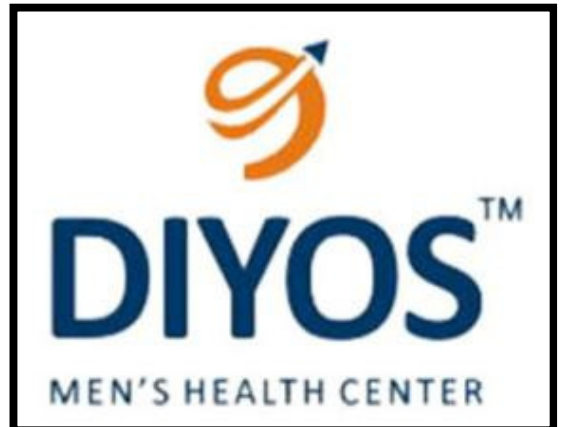
MEDICAL EDUCATION DEPARTMENT

GOVERNMENT MEDICAL COLLEGE, HALDWANI

Dr SUSHILA TIWARI GOVT. HOSPITAL



SGT Medical College
Hospital & Research Institute



REGD. ADDRESS & FACTORY (DELHI/NCR):

CREATIVE HEALTH TECH PVT LTD
Plot No.394, Udyog Kendra-II, ECOTECH-III
Greater NOIDA, G.B.Ngar, UP, India,
PIN-201306

Contact Person: Mr.Sunil Dutt, Director
Mob: +91-9911924646, +91-9811339989
E-Mail: sales1@creativemodularot.co.in
Alternative E-mail: chplmed@gmail.com
Web Site: www.creativemodularot.co.in
Web Site: www.creativeoperationtheatre.com

Technical Information: info@creativemodularot.co.in
Customer Service: service@creativemodularot.co.in
Project Execution: project@creativemodularot.co.in

SUPPLY & INSTALLATION IN ALL OVER INDIA & ABROAD

**www.creativemodularot.co.in,
info@creativemodularot.co.in**

